



# CALIBER 35

TECHNICAL DATASHEET

## PROJECT INFORMATION

Project Name:

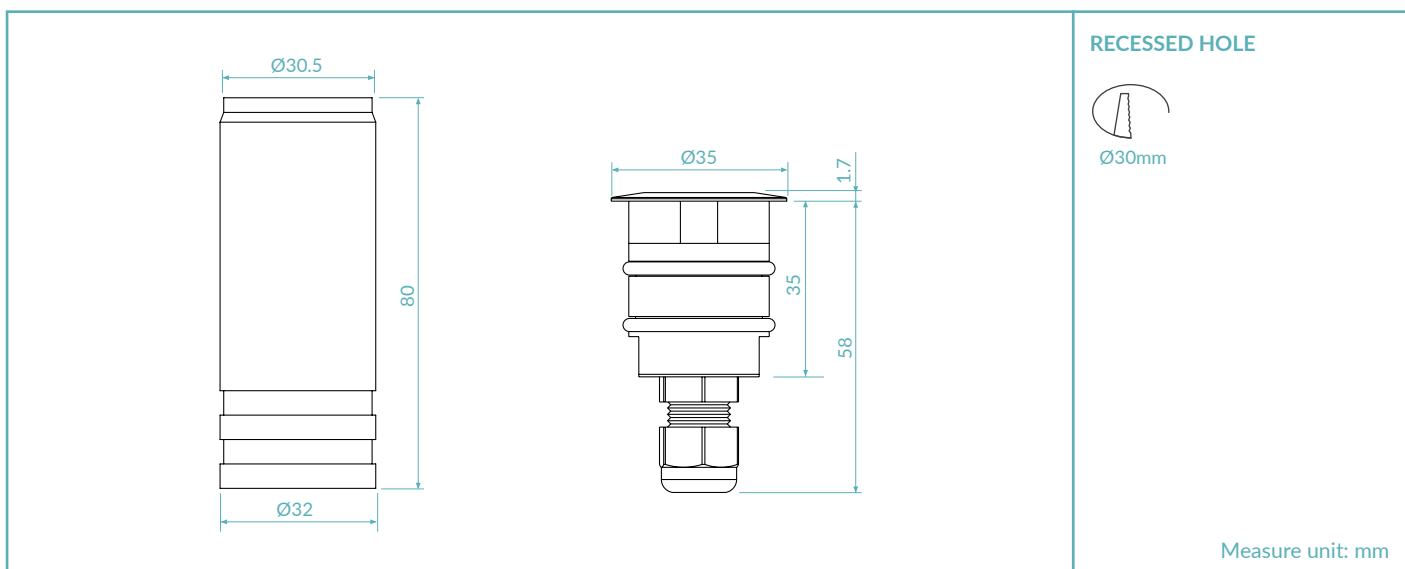
Reference:

Quantity:

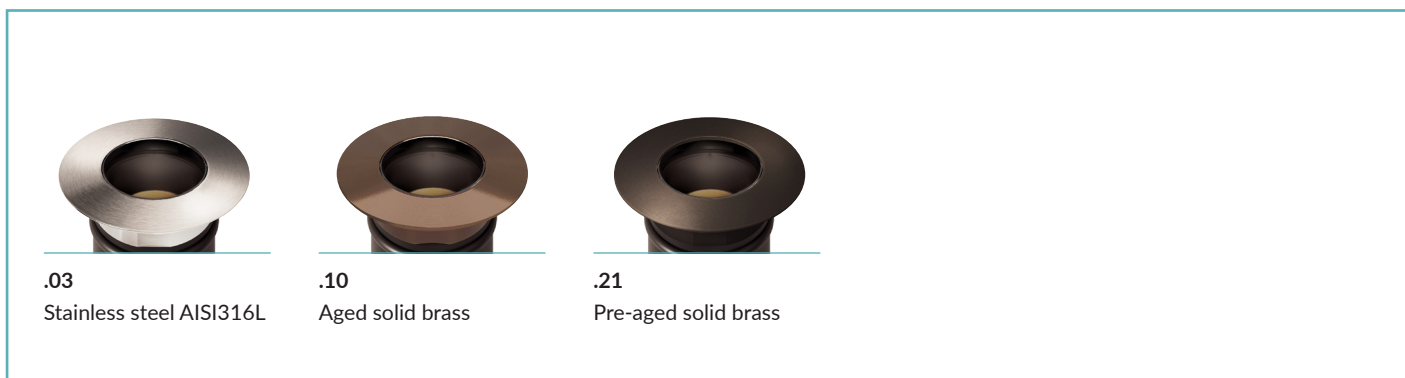


IP68  
MADE IN ITALY


## TECHNICAL DRAWING



## FINISHES



## PRODUCT CODE

<b>C35 = CALIBER 35</b>	Select one component from each column to specify a complete configuration:			
	LED colour	Optics	Finish	Power
	22 = 2200K 27 = 2700K 30 = 3000K 40 = 4000K	N = 10° M = 20° W = 41° E = 10°x45° S = Satin	03 = Stainless steel AISI316L 10 = Aged solid brass 21 = Pre-aged solid brass	02 = 2W

Standard configuration example:

**C35.27.N.03.02** | Caliber 35 2700K 10° optics stainless steel 2W

## TECHNICAL SHEET

### LIGHTING CHARACTERISTICS

Color Rendering Index	CRI > 90
Lumen output (source)	202 lm (3000K)
Lumen output (delivered)	168 lm (3000K)
Optics	10° / 20° / 41° / 10°x45° / Satin
LED colour temperature	2200K / 2700K / 3000K / 4000K
LED lifetime	50000h L95 B10 (Ta 25°C)
Bin selection	Binning free

### MECHANICAL CHARACTERISTICS

Body	Stainless Steel AISI316L - Anodized aluminium 6026 / Solid brass - Anodized aluminium 6026
Glass	Tempered extra clear / frosted glass 4mm
Finishes	Stainless Steel AISI316L / Aged solid brass / Pre-aged solid brass
Installation	Housing box
Impact resistance	IK08
Weight	100g

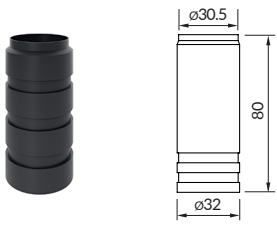
### ELECTRICAL CHARACTERISTICS

Power supply	Constant voltage 24Vdc
Power supply cables	35cm NS20N PCP 2x0,5mm <sup>2</sup>
Power consumption	2 Watt
Dimmable	Dimmable

### GENERAL CHARACTERISTICS

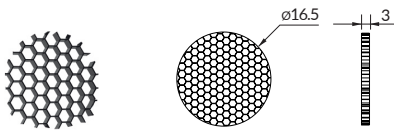
Operating temperature	-20°C +50°C
IP rating	IP68 (not for permanent immersion)
Insulation class	Class III
Photobiological risk	RG0/RG1

ACCESSORIES



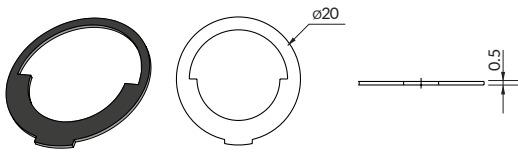
Housing box

Art. Nr.  
HB.018



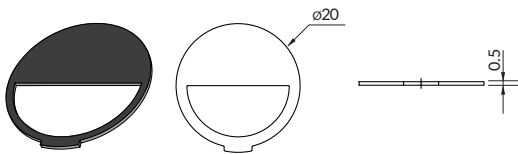
Honeycomb louvers

Art. Nr.  
ACC.190



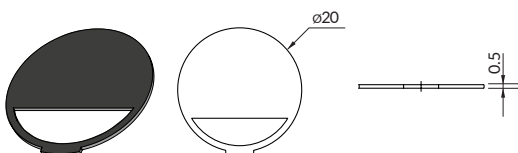
Anti-Glare louvers

Art. Nr.  
ACC.187



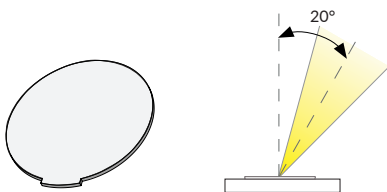
Anti-Glare louvers  
50%

Art. Nr.  
ACC.188



Anti-Glare louvers  
70%

Art. Nr.  
ACC.189



20° Asymmetric film

Art. Nr.  
ACC.186



Cable

Art. Nr.  
CV00037  
CV00040  
CV00041  
CV00042  
CV00043

Length  
5m  
10m  
15m  
20m  
25m

## POWER SUPPLIES 24Vdc CONSTANT VOLTAGE

## On / Off

Code	Input	I Out	V Out	Watt	IP
PSU.CX.004	110÷240V / 50/60 Hz	0,9 A	24Vdc	20	IP20
PSU.CV.005	90÷305V / 47/63 Hz	1 A	24Vdc	25	IP67
PSU.CV.006	90÷305V / 47/63 Hz	2,5 A	24Vdc	60	IP67
PSU.CV.007	90÷305V / 47/63 Hz	3,75 A	24Vdc	90	IP67
PSU.CV.021	90÷305V / 47/63 Hz	10 A	24Vdc	240	IP67

## Control Gear

Code	Input	I Out	V Out	Watt	IP
CGE.004 - 0/1-10V	24Vdc	12 A	24Vdc	288	IP20
CGE.017 - DALI	24Vdc	12 A	24Vdc	288	IP20
CGE.017.IP - DALI	24Vdc	12 A	24Vdc	288	IP67
CGE.020 - DMX	24Vdc	6,5 A	24Vdc	156	IP20

OPTICS

